

SITE PLAN

Arrival

- 1 Grand Arrival

Family Zone

- 2 Bubble Jet
- 3 Lap Pool (1200mm Depth)
- 4 Serenity Pool Deck
- 5 Star Gazing Lawn
- 6 Picnic Pavilion
- 7 Swing Garden
- 8 Jogging Trail
- 9 Grand Lawn

Central

- 10 Botany Playground
- 11 Trampoline Scape
- 12 Rock Climb Wall
- 13 Botany Gourmet Dining
- 14 Function Deck
- 15 Alfresco Dining
- 16 Hanging Hammock
- 17 Family Deck
- 18 Water Jet Pool (900mm Depth)
- 19 Spa Bed
- 20 Jet Foot Massage
- 21 Sun Deck

Hilltop Deck

- 22 Wellness Pool (900mm Depth)
- 23 Spa Seat
- 24 Hilltop Deck
- 25 Family Pool (1200mm Depth)
- 26 Water Sunken Seat
- 27 Outdoor Grill Pavilion

- 28 Pool Lounge
- 29 Water Lounge
- 30 Dining Lounge (Open To Sky)
- 31 Aqua Gym (900mm Depth)
- 32 Pool Bar
- 33 Kids Pool (500mm Depth)
- 34 Kids Pool Deck
- 35 Workout Station
- 36 Cardio Trail
- 37 BBQ Pavilion
- 38 Recreational Tennis Court
- 39 Washrooms
- 40 Link Bridge (2nd Storey)
- 41 Gymnasium (2nd Storey)
- 42 Co-Working Space (2nd Storey)
- 43 Open Terrace (2nd Storey)
- 44 Function Room (2nd Storey)

Wellness

- 45 Firefly Path
- 46 Reflexology Path
- 47 Herb Garden
- 48 Tea Pavilion
- 49 Fitness Park
- 50 Bicycle Park

Others

- A Guard Post
- B Side Gate
- C Substation / Transformer Room (Basement)
- D Bin Centre (Basement)
- E Genset
- F Water Tank
- G Fire Engine Access (Emergency Only)
- H Ventilation Shaft
- I Management Office



ARTIST'S IMPRESSION



0m 3m 15m 30m
SCALE 1 : 300
BP APPROVAL NUMBER : A1409 - 02203 - 2022 - BP01
BP APPROVAL DATE : 23 NOVEMBER 2022

DISTRIBUTION CHART

3 Dairy Farm Walk, Singapore 679625								
	01	02	03	04	05	06	07	08
15th	B3S(L)	D1(L)	C1(L)	A1S(L)	B2P(L)	C4P(L)	C2 (L)	B1(L)
14th	B3S	D1	C1	A1S	B2P	C4P	C2	B1
13th	B3S	D1	C1	A1S	B2P	C4P	C2	B1
12th	B3S	D1	C1	A1S	B2P	C4P	C2	B1
11th	B3S	D1	C1	A1S	B2P	C4P	C2	B1
10th	B3S	D1	C1	A1S	B2P	C4P	C2	B1
9th	B3S	D1	C1	A1S	B2P	C4P	C2	B1
8th	B3S	D1	C1	A1S	B2P	C4P	C2	B1
7th	B3S	D1	C1	A1S	B2P	C4P	C2	B1
6th	B3S	D1	C1	A1S	B2P	C4P	C2	B1
5th	B3S	D1	C1	A1S	B2P	C4P	C2	B1
4th	B3S	D1	C1	A1S	B2P	C4P	C2	B1
3rd	B3S	D1	C1	A1S	B2P	C4P		B1
2nd	B3S	D1	C1	A1S	B2P	C4P		B1
1st	B3S(p)	D1(p)	C1(p)	A1S(p)	B2P(p)	C4P(p)		B1(p)

5 Dairy Farm Walk, Singapore 679626								
	09	10	11	12	13	14	15	16
9th	B3S(L)	C6F(L)	C6F(L)	A1S(L)	B2P(L)	C4P(L)	C3(L)	B1(L)
8th	B3S	C6F	C6F	A1S	B2P	C4P	C3	B1
7th	B3S	C6F	C6F	A1S	B2P	C4P	C3	B1
6th	B3S	C6F	C6F	A1S	B2P	C4P	C3	B1
5th	B3S	C6F	C6F	A1S	B2P	C4P	C3	B1
4th	B3S	C6F	C6F	A1S	B2P	C4P	C3	B1
3rd	B3S	C6F	C6F	A1S	B2P	C4P	C3	B1
2nd			C6F	A1S	B2P	C4P		
1st			C6F(p)	A1S(p)	B2P(p)	C4P(p)		

7 Dairy Farm Walk, Singapore 679627								
	17	18	19	20	21	22	23	24
13th	B3S(L)	C6F(L)	C6F(L)	A1S(L)	B2P(L)	C4P(L)	C3(L)	B1(L)
12th	B3S	C6F	C6F	A1S	B2P	C4P	C3	B1
11th	B3S	C6F	C6F	A1S	B2P	C4P	C3	B1
10th	B3S	C6F	C6F	A1S	B2P	C4P	C3	B1
9th	B3S	C6F	C6F	A1S	B2P	C4P	C3	B1
8th	B3S	C6F	C6F	A1S	B2P	C4P	C3	B1
7th	B3S	C6F	C6F	A1S	B2P	C4P	C3	B1
6th	B3S	C6F	C6F	A1S	B2P	C4P	C3	B1
5th	B3S	C6F	C6F	A1S	B2P	C4P	C3	B1
4th	B3S	C6F	C6F	A1S	B2P	C4P	C3	B1
3rd	B3S	C6F	C6F	A1S	B2P	C4P	C3	B1
2nd	B3S	C6F	C6F	A1S	B2P	C4P	C3	B1
1st								

LEGEND

- 1-Bedroom + Study
- 2-Bedroom
- 2-Bedroom Premium
- 2-Bedroom + Study
- 3-Bedroom
- 3-Bedroom Premium
- 3-Bedroom Flexi
- 3-Bedroom + Study
- 4-Bedroom
- 5-Bedroom

9 Dairy Farm Walk, Singapore 679628				
	25	26	27	28
14th	C5P(L)	D2(L)	D2(L)	C7S(L)
13th	C5P	D2	D2	C7S
12th	C5P	D2	D2	C7S
11th	C5P	D2	D2	C7S
10th	C5P	D2	D2	C7S
9th	C5P	D2	D2	C7S
8th	C5P	D2	D2	C7S
7th	C5P	D2	D2	C7S
6th	C5P	D2	D2	C7S
5th	C5P	D2	D2	C7S
4th	C5P	D2	D2	C7S
3rd	C5P	D2	D2	C7S
2nd	C5P	D2	D2	C7S
1st	C5P(p)	D2(p)	D2(p)	C7S(p)

11 Dairy Farm Walk, Singapore 679629				
	29	30	31	32
14th	C7S(L)	D2(L)	E1(L)	C5P(L)
13th	C7S	D2	E1	C5P
12th	C7S	D2	E1	C5P
11th	C7S	D2	E1	C5P
10th	C7S	D2	E1	C5P
9th	C7S	D2	E1	C5P
8th	C7S	D2	E1	C5P
7th	C7S	D2	E1	C5P
6th	C7S	D2	E1	C5P
5th	C7S	D2	E1	C5P
4th	C7S	D2	E1	C5P
3rd	C7S	D2	E1	
2nd	C7S	D2	E1	
1st	C7S(p)	D2(p)	E1(p)	

1-BEDROOM + STUDY

TYPE A1S

47 sqm / 506 sqft

- Blk 3 #02-04 to #14-04
- Blk 5 #02-12 to #08-12
- Blk 7 #02-20 to #12-20

TYPE A1S(L)

66 sqm / 710 sqft

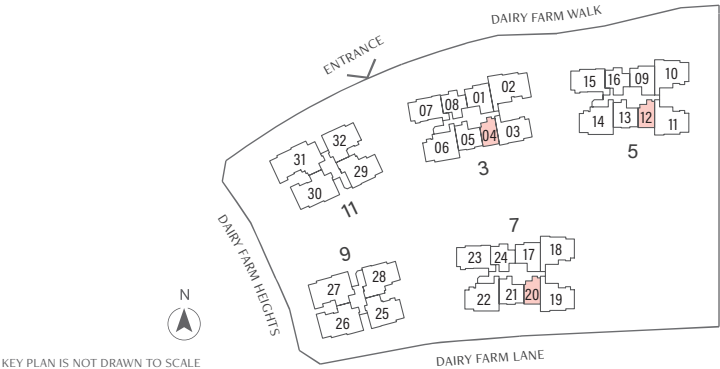
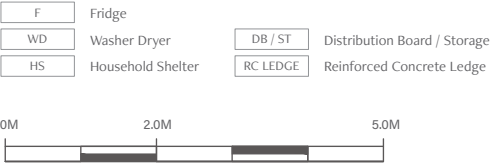
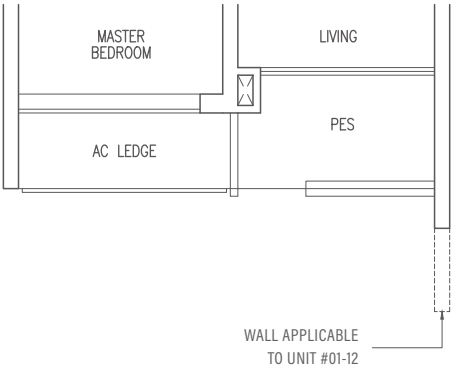
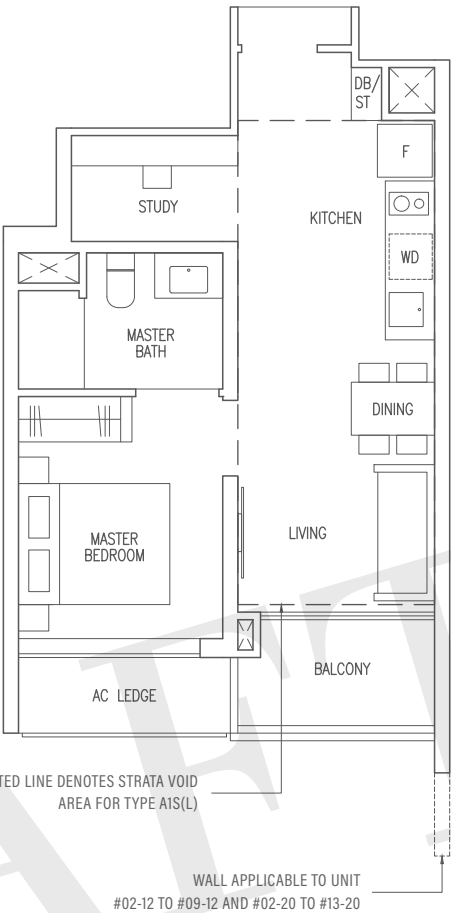
(Inclusive of 19 sqm strata void over living / dining)

- Blk 3 #15-04
- Blk 5 #09-12
- Blk 7 #13-20

TYPE A1S(p)

47 sqm / 506 sqft

- Blk 3 #01-04
- Blk 5 #01-12



Area includes AC ledge, balcony, Private Enclosed Space (PES) and strata void where applicable. All RC ledges are excluded from strata area and are non-load bearing. Some units are mirror images of the floor plans shown in the brochure. Orientations and facings will differ depending on the unit you are purchasing, please refer to the key plan. The above plans and illustrations are subject to changes as may be required or approved by the relevant authorities and do not form part of any offer or contract. Areas are estimates only and are subject to final survey. The balcony & PES shall not be enclosed unless with the approved balcony screen. For an illustration of the approved balcony screen, please refer to Annex 1 of this brochure.

TYPE B1

56 sqm / 603 sqft

- Blk 3 #02-08 to #14-08
- Blk 5 #03-16 to #08-16
- Blk 7 #02-24 to #12-24

TYPE B1(L)

69 sqm / 743 sqft

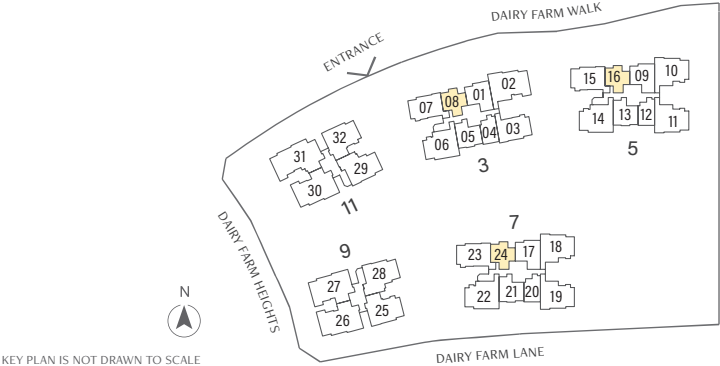
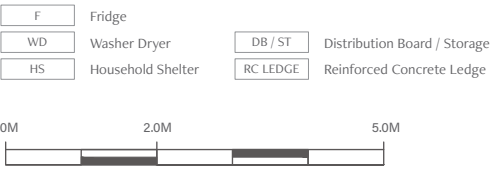
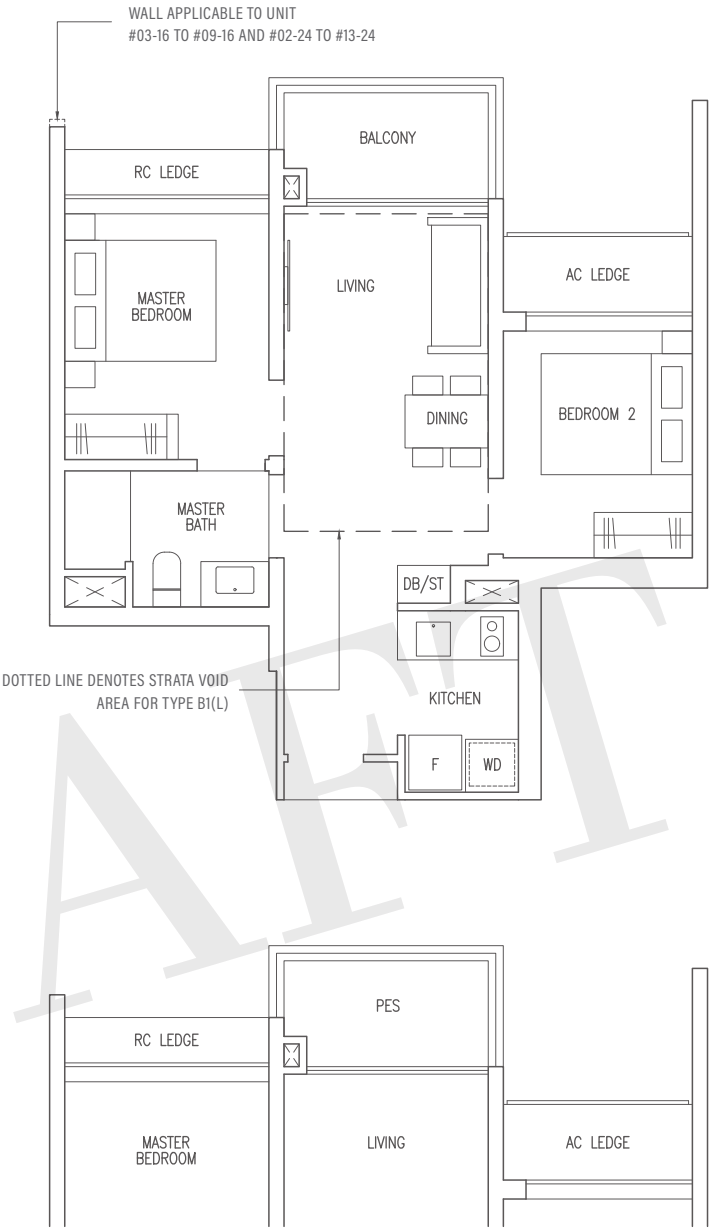
(Inclusive of 13 sqm strata void over living / dining)

- Blk 3 #15-08
- Blk 5 #09-16
- Blk 7 #13-24

TYPE B1(p)

56 sqm / 603 sqft

- Blk 3 #01-08



Area includes AC ledge, balcony, Private Enclosed Space (PES) and strata void where applicable. All RC ledges are excluded from strata area and are non-load bearing. Some units are mirror images of the floor plans shown in the brochure. Orientations and facings will differ depending on the unit you are purchasing, please refer to the key plan. The above plans and illustrations are subject to changes as may be required or approved by the relevant authorities and do not form part of any offer or contract. Areas are estimates only and are subject to final survey. The balcony & PES shall not be enclosed unless with the approved balcony screen. For an illustration of the approved balcony screen, please refer to Annex 1 of this brochure.

2-BEDROOM PREMIUM

TYPE B2P

63 sqm / 678 sqft

Blk 3 #02-05 to #14-05

Blk 5 #02-13 to #08-13

Blk 7 #02-21 to #12-21

TYPE B2P(L)

77 sqm / 829 sqft

(Inclusive of 14 sqm strata void over living / dining)

Blk 3 #15-05

Blk 5 #09-13

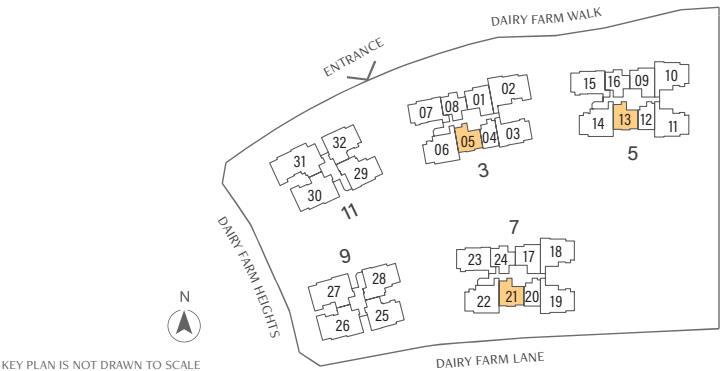
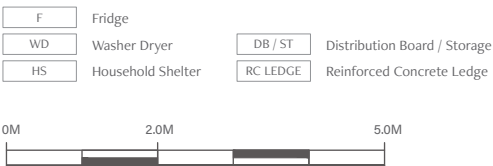
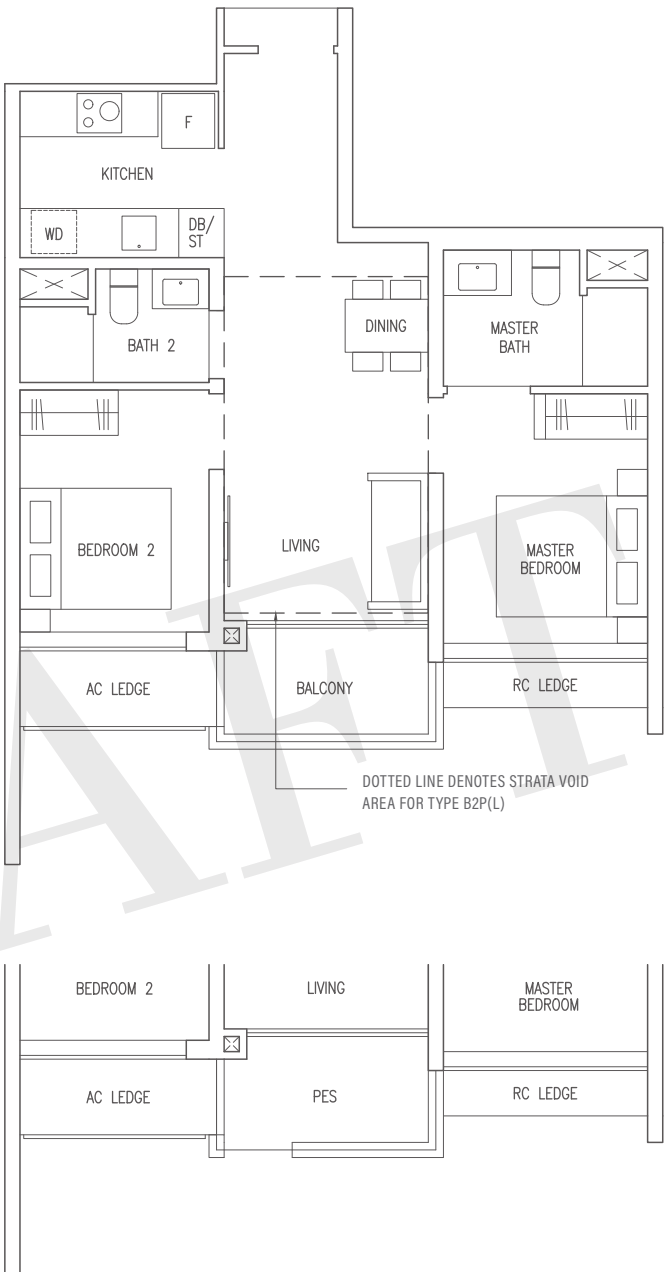
Blk 7 #13-21

TYPE B2P(p)

63 sqm / 678 sqft

Blk 3 #01-05

Blk 5 #01-13



Area includes AC ledge, balcony, Private Enclosed Space (PES) and strata void where applicable. All RC ledges are excluded from strata area and are non-load bearing. Some units are mirror images of the floor plans shown in the brochure. Orientations and facings will differ depending on the unit you are purchasing, please refer to the key plan. The above plans and illustrations are subject to changes as may be required or approved by the relevant authorities and do not form part of any offer or contract. Areas are estimates only and are subject to final survey. The balcony & PES shall not be enclosed unless with the approved balcony screen. For an illustration of the approved balcony screen, please refer to Annex 1 of this brochure.

TYPE B3S

69 sqm / 743 sqft

- Blk 3 #02-01 to #14-01
- Blk 5 #03-09 to #08-09
- Blk 7 #02-17 to #12-17

TYPE B3S(L)

84 sqm / 904 sqft

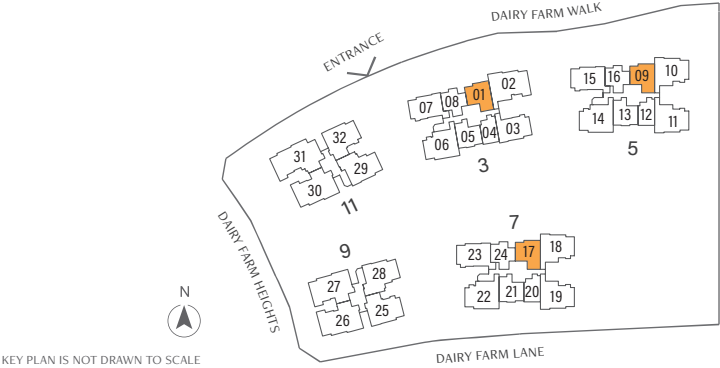
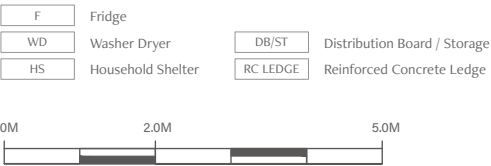
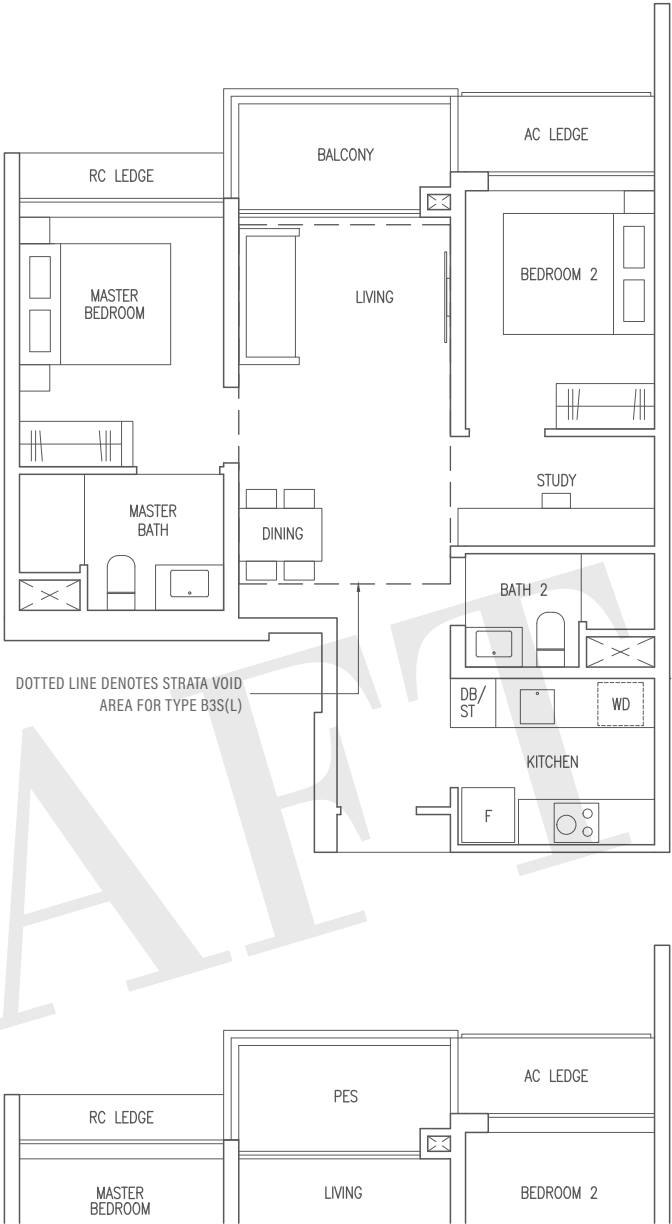
(Inclusive of 15 sqm strata void over living / dining)

- Blk 3 #15-01
- Blk 5 #09-09
- Blk 7 #13-17

TYPE B3S(p)

69 sqm / 743 sqft

- Blk 3 #01-01



Area includes AC ledge, balcony, Private Enclosed Space (PES) and strata void where applicable. All RC ledges are excluded from strata area and are non-load bearing. Some units are mirror images of the floor plans shown in the brochure. Orientations and facings will differ depending on the unit you are purchasing, please refer to the key plan. The above plans and illustrations are subject to changes as may be required or approved by the relevant authorities and do not form part of any offer or contract. Areas are estimates only and are subject to final survey. The balcony & PES shall not be enclosed unless with the approved balcony screen. For an illustration of the approved balcony screen, please refer to Annex 1 of this brochure.

3-BEDROOM

TYPE C1

82 sqm / 883 sqft

Blk 3 #02-03 to #14-03

TYPE C1(L)

97 sqm / 1044 sqft

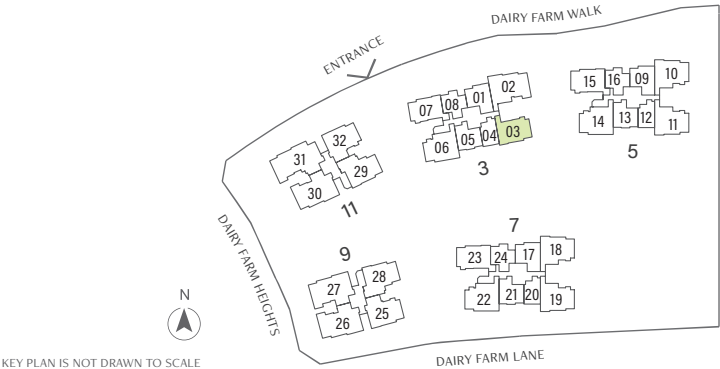
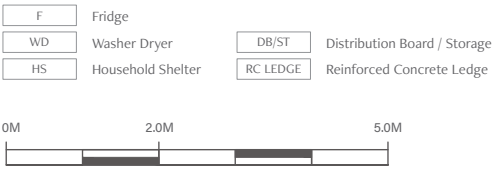
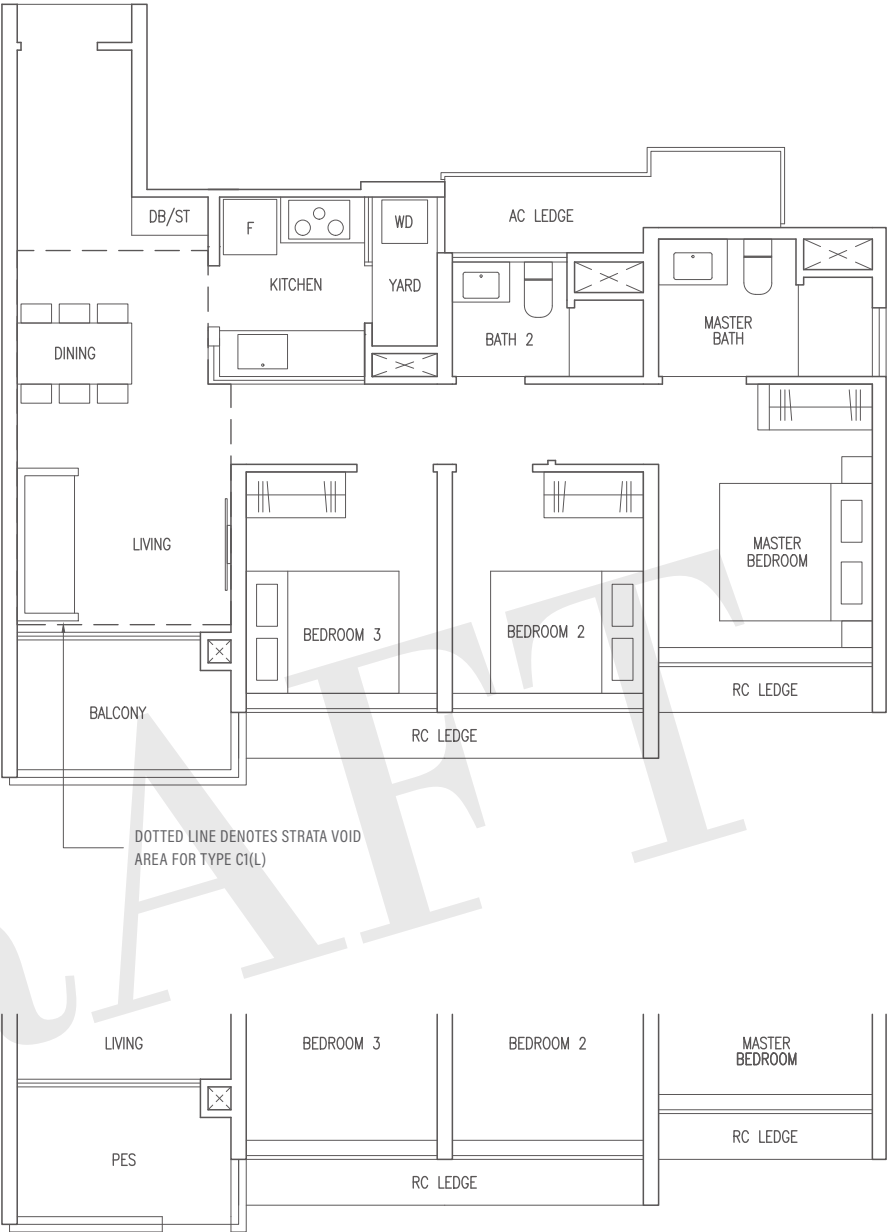
(Inclusive of 15 sqm strata void over living / dining)

Blk 3 #15-03

TYPE C1(p)

82 sqm / 883 sqft

Blk 3 #01-03



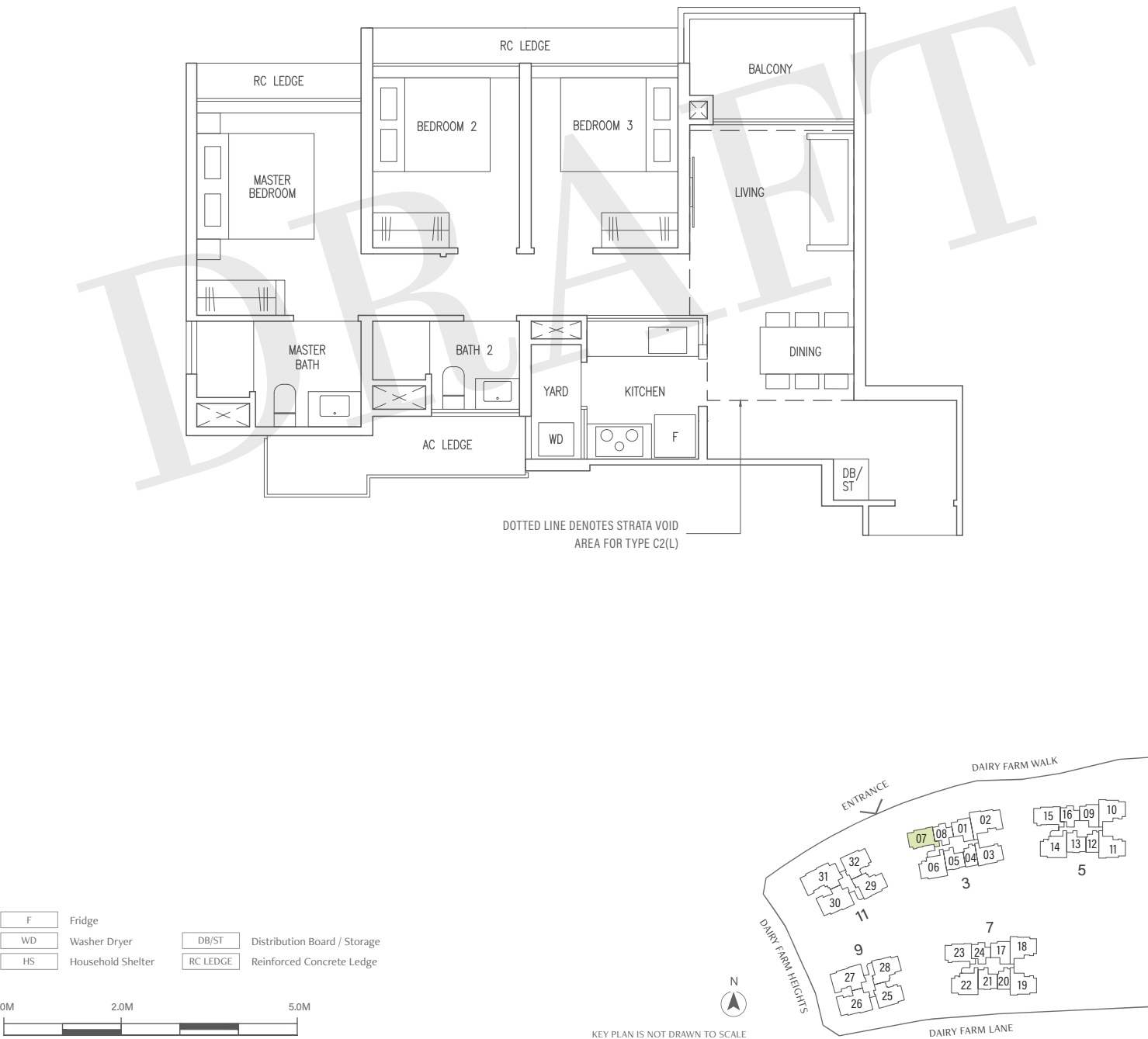
Area includes AC ledge, balcony, Private Enclosed Space (PES) and strata void where applicable. All RC ledges are excluded from strata area and are non-load bearing. Some units are mirror images of the floor plans shown in the brochure. Orientations and facings will differ depending on the unit you are purchasing, please refer to the key plan. The above plans and illustrations are subject to changes as may be required or approved by the relevant authorities and do not form part of any offer or contract. Areas are estimates only and are subject to final survey. The balcony & PES shall not be enclosed unless with the approved balcony screen. For an illustration of the approved balcony screen, please refer to Annex 1 of this brochure.

TYPE C2
82 sqm / 883 sqft

Blk 3 #04-07 to #14-07

TYPE C2(L)
96 sqm / 1033 sqft
(Inclusive of 14 sqm strata void over living / dining)

Blk 3 #15-07



Area includes AC ledge, balcony, Private Enclosed Space (PES) and strata void where applicable. All RC ledges are excluded from strata area and are non-load bearing. Some units are mirror images of the floor plans shown in the brochure. Orientations and facings will differ depending on the unit you are purchasing, please refer to the key plan. The above plans and illustrations are subject to changes as may be required or approved by the relevant authorities and do not form part of any offer or contract. Areas are estimates only and are subject to final survey. The balcony & PES shall not be enclosed unless with the approved balcony screen. For an illustration of the approved balcony screen, please refer to Annex 1 of this brochure.

3-BEDROOM

TYPE C3

86 sqm / 926 sqft

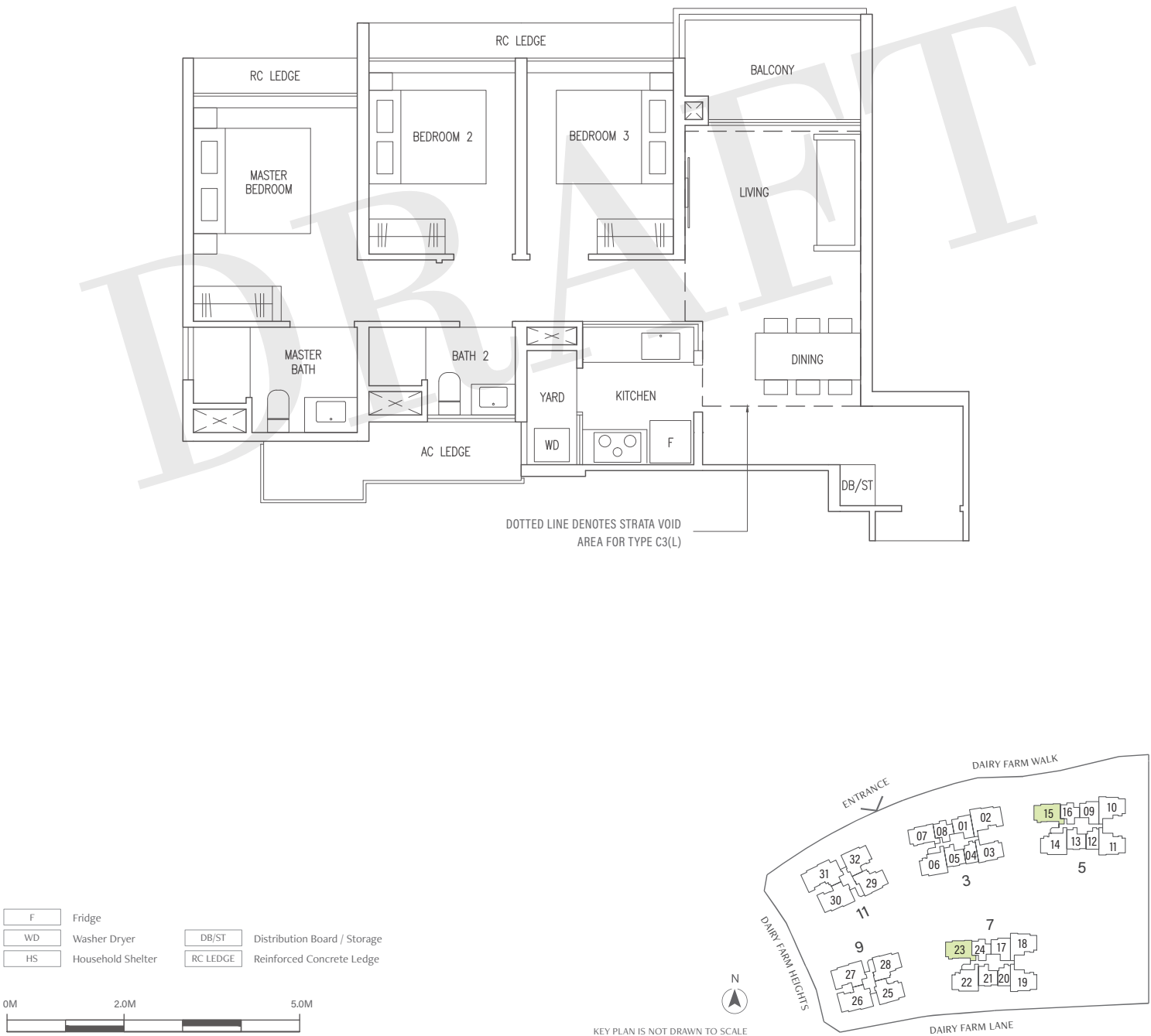
- Blk 5 #03-15 to #08-15
- Blk 7 #02-23 to #12-23

TYPE C3(L)

102 sqm / 1098 sqft

(Inclusive of 16 sqm strata void over living / dining)

- Blk 5 #09-15
- Blk 7 #13-23



Area includes AC ledge, balcony, Private Enclosed Space (PES) and strata void where applicable. All RC ledges are excluded from strata area and are non-load bearing. Some units are mirror images of the floor plans shown in the brochure. Orientations and facings will differ depending on the unit you are purchasing, please refer to the key plan. The above plans and illustrations are subject to changes as may be required or approved by the relevant authorities and do not form part of any offer or contract. Areas are estimates only and are subject to final survey. The balcony & PES shall not be enclosed unless with the approved balcony screen. For an illustration of the approved balcony screen, please refer to Annex 1 of this brochure.

TYPE C4P

96 sqm / 1033 sqft

- Blk 3 #02-06 to #14-06
- Blk 5 #02-14 to #08-14
- Blk 7 #02-22 to #12-22

TYPE C4P(L)

112 sqm / 1206 sqft

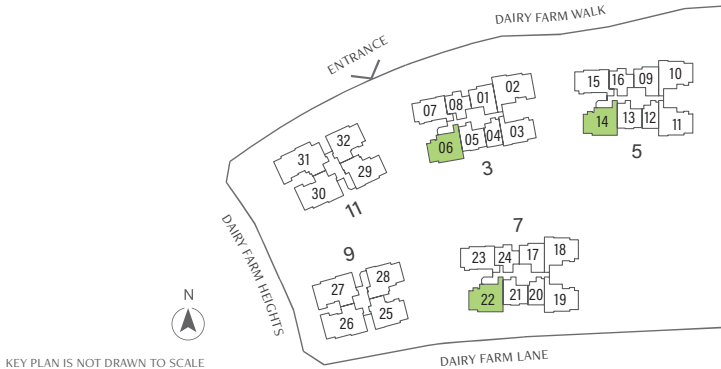
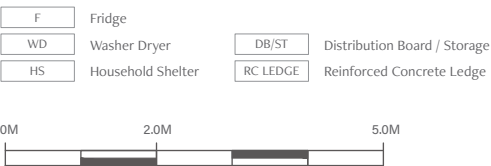
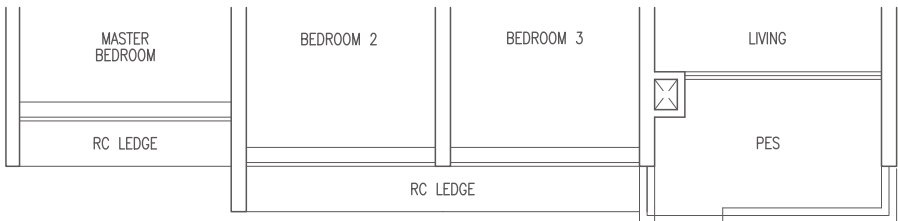
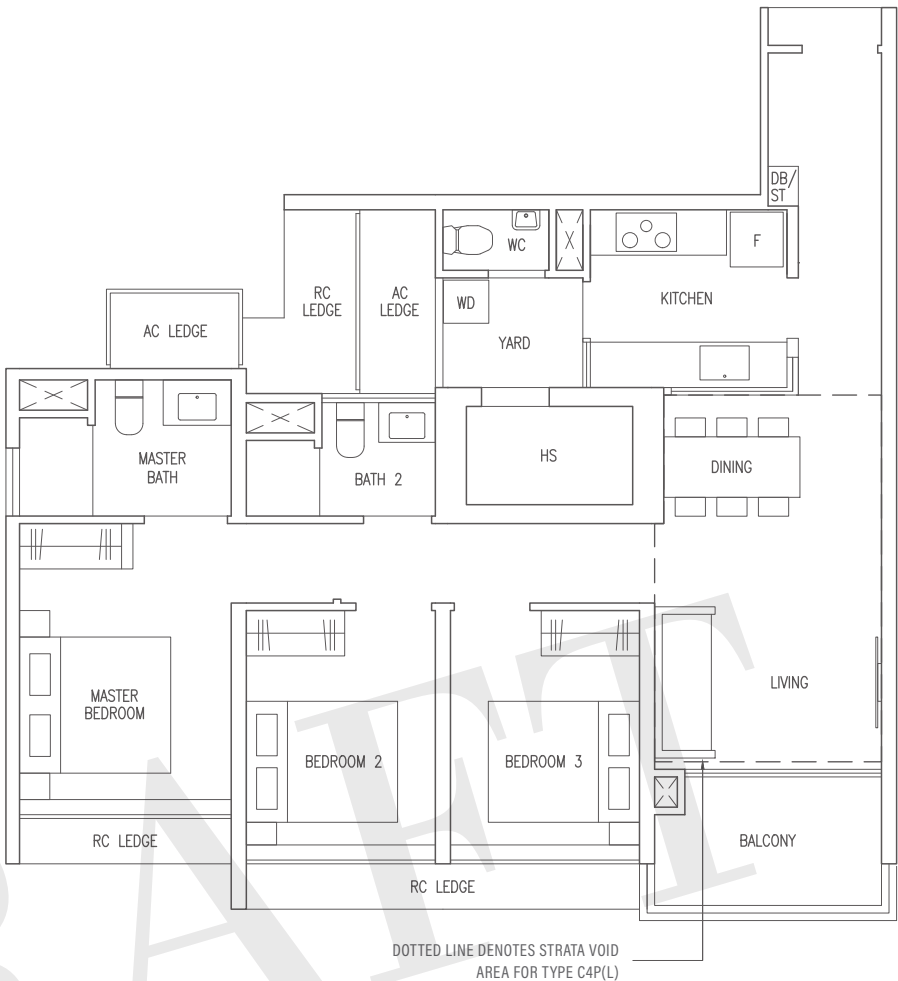
(Inclusive of 16 sqm strata void over living / dining)

- Blk 3 #15-06
- Blk 5 #09-14
- Blk 7 #13-22

TYPE C4P(p)

96 sqm / 1033 sqft

- Blk 3 #01-06
- Blk 5 #01-14



Area includes AC ledge, balcony, Private Enclosed Space (PES) and strata void where applicable. All RC ledges are excluded from strata area and are non-load bearing. Some units are mirror images of the floor plans shown in the brochure. Orientations and facings will differ depending on the unit you are purchasing, please refer to the key plan. The above plans and illustrations are subject to changes as may be required or approved by the relevant authorities and do not form part of any offer or contract. Areas are estimates only and are subject to final survey. The balcony & PES shall not be enclosed unless with the approved balcony screen. For an illustration of the approved balcony screen, please refer to Annex 1 of this brochure.

3-BEDROOM PREMIUM

TYPE C5P

96 sqm / 1033 sqft

Blk 9 #02-25 to #13-25

MIRROR UNIT

Blk 11 #04-32 to #13-32

TYPE C5P(L)

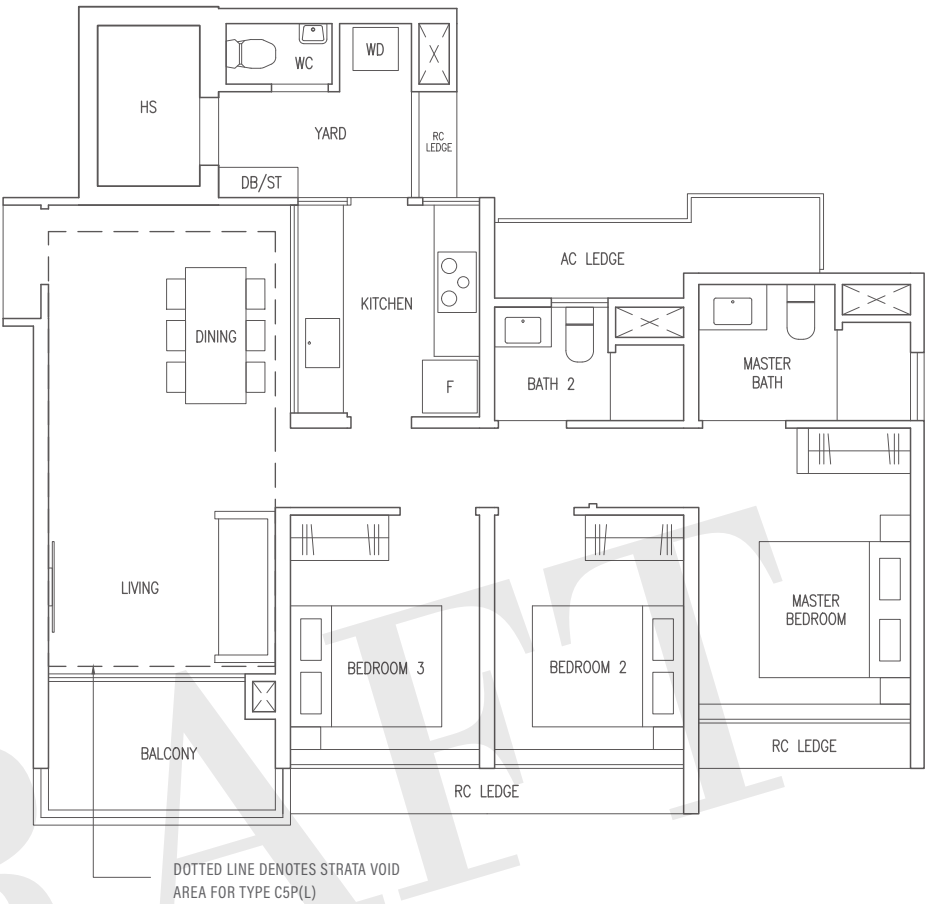
115 sqm / 1238 sqft

(Inclusive of 19 sqm strata void over living / dining)

Blk 9 #14-25

MIRROR UNIT

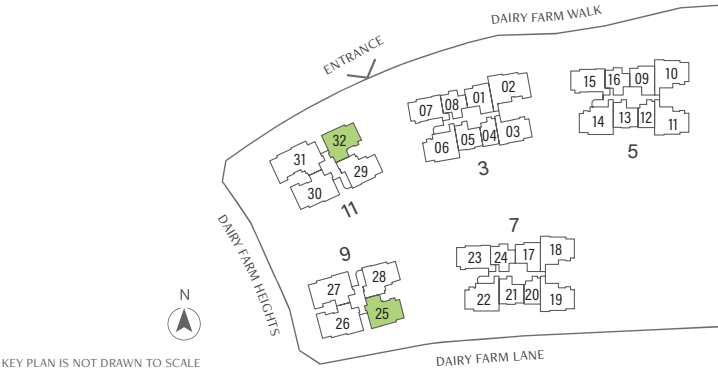
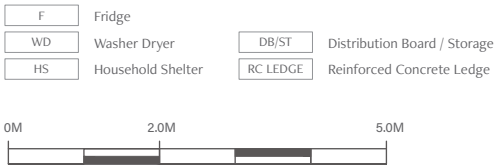
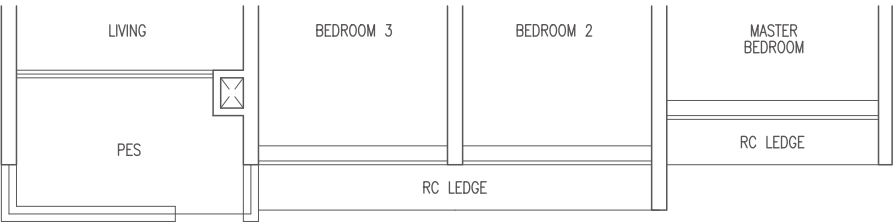
Blk 11 #14-32



TYPE C5P(p)

96 sqm / 1033 sqft

Blk 9 #01-25



Area includes AC ledge, balcony, Private Enclosed Space (PES) and strata void where applicable. All RC ledges are excluded from strata area and are non-load bearing. Some units are mirror images of the floor plans shown in the brochure. Orientations and facings will differ depending on the unit you are purchasing, please refer to the key plan. The above plans and illustrations are subject to changes as may be required or approved by the relevant authorities and do not form part of any offer or contract. Areas are estimates only and are subject to final survey. The balcony & PES shall not be enclosed unless with the approved balcony screen. For an illustration of the approved balcony screen, please refer to Annex 1 of this brochure.

TYPE C6F

96 sqm / 1033 sqft

- Blk 5 #03-10 to #08-10
- Blk 7 #02-18 to #12-18

MIRROR UNIT

- Blk 5 #02-11 to #08-11
- Blk 7 #02-19 to #12-19

TYPE C6F(L)

113 sqm / 1216 sqft

(Inclusive of 17 sqm strata void over living / dining)

- Blk 5 #09-10
- Blk 7 #13-18

MIRROR UNIT

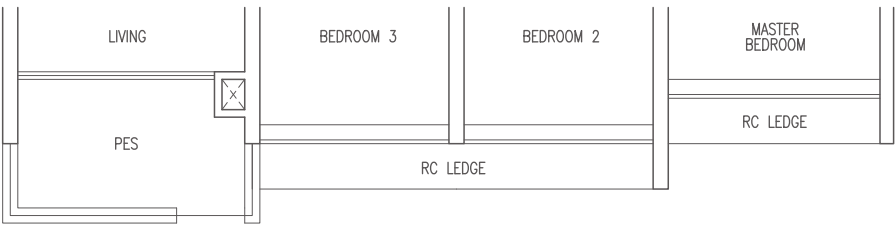
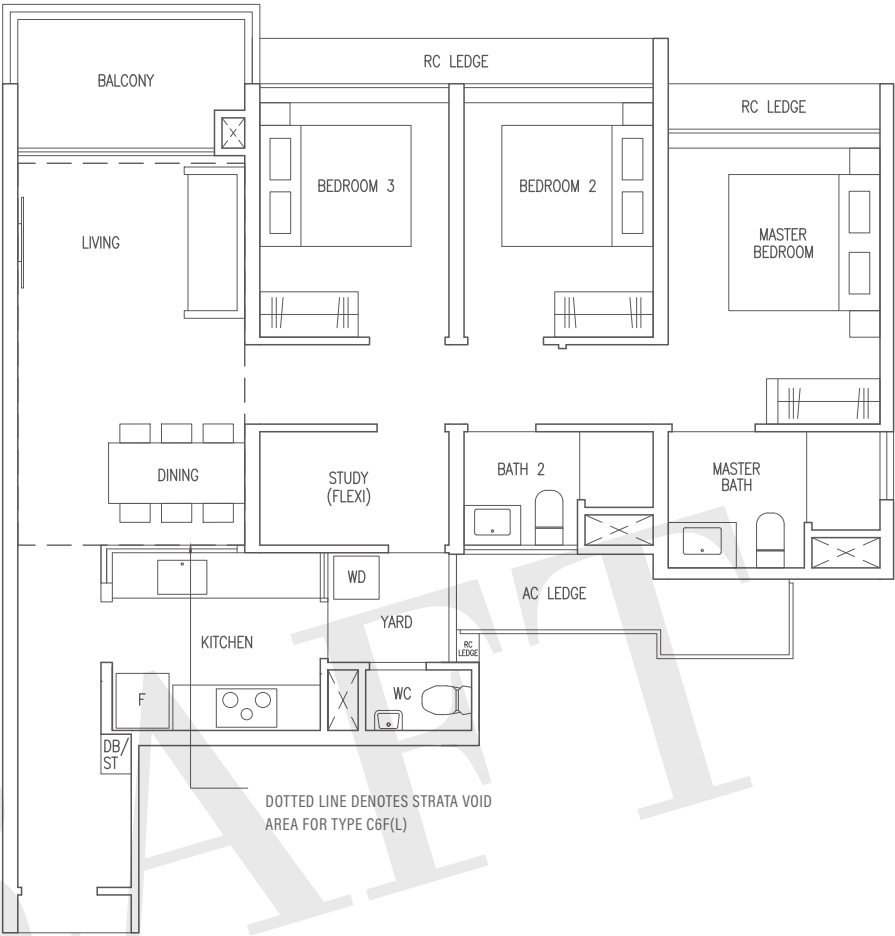
- Blk 5 #09-11
- Blk 7 #13-19

TYPE C6F(p)

96 sqm / 1033 sqft

MIRROR UNIT

- Blk 5 #01-11



F	Fridge	DB/ST	Distribution Board / Storage
WD	Washer Dryer	RC LEDGE	Reinforced Concrete Ledge
HS	Household Shelter		



Area includes AC ledge, balcony, Private Enclosed Space (PES) and strata void where applicable. All RC ledges are excluded from strata area and are non-load bearing. Some units are mirror images of the floor plans shown in the brochure. Orientations and facings will differ depending on the unit you are purchasing, please refer to the key plan. The above plans and illustrations are subject to changes as may be required or approved by the relevant authorities and do not form part of any offer or contract. Areas are estimates only and are subject to final survey. The balcony & PES shall not be enclosed unless with the approved balcony screen. For an illustration of the approved balcony screen, please refer to Annex 1 of this brochure.

3-BEDROOM + STUDY

TYPE C7S

100 sqm / 1076 sqft

Blk 9 #02-28 to #13-28

MIRROR UNIT

Blk 11 #02-29 to #13-29

TYPE C7S(L)

119 sqm / 1281 sqft

(Inclusive of 19 sqm strata void over living / dining)

Blk 9 #14-28

MIRROR UNIT

Blk 11 #14-29

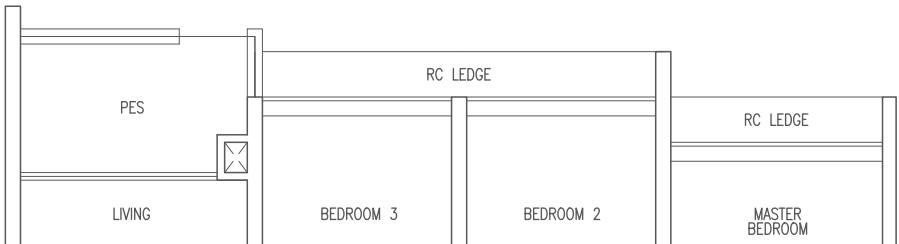
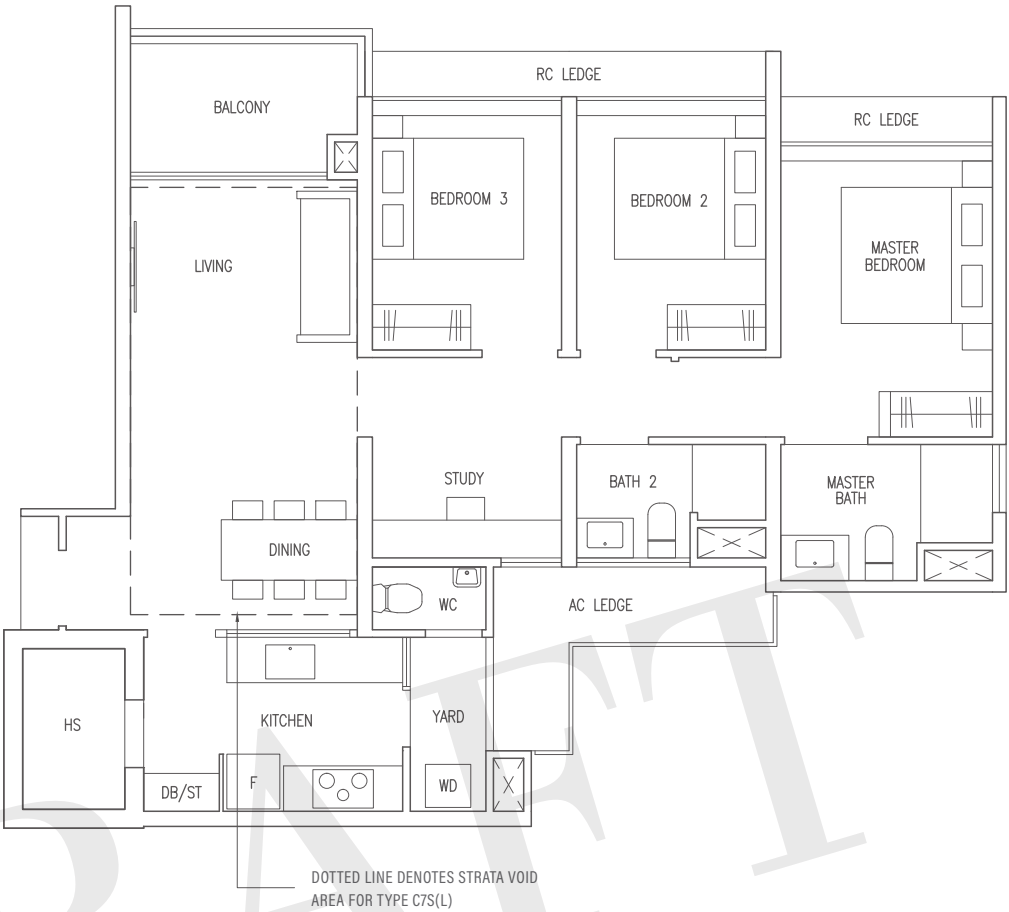
TYPE C7S(p)

100 sqm / 1076 sqft

Blk 9 #01-28

MIRROR UNIT

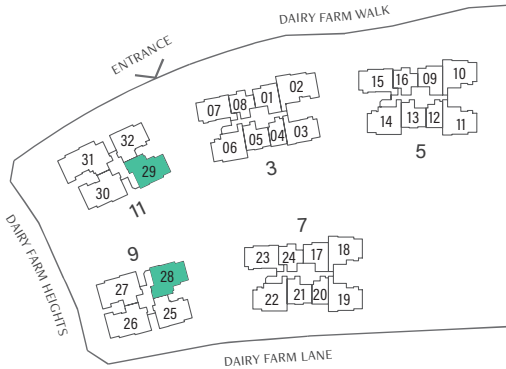
Blk 11 #01-29



F	Fridge	DB/ST	Distribution Board / Storage
WD	Washer Dryer	RC LEDGE	Reinforced Concrete Ledge
HS	Household Shelter		



KEY PLAN IS NOT DRAWN TO SCALE



Area includes AC ledge, balcony, Private Enclosed Space (PES) and strata void where applicable. All RC ledges are excluded from strata area and are non-load bearing. Some units are mirror images of the floor plans shown in the brochure. Orientations and facings will differ depending on the unit you are purchasing, please refer to the key plan. The above plans and illustrations are subject to changes as may be required or approved by the relevant authorities and do not form part of any offer or contract. Areas are estimates only and are subject to final survey. The balcony & PES shall not be enclosed unless with the approved balcony screen. For an illustration of the approved balcony screen, please refer to Annex 1 of this brochure.

TYPE D1

118 sqm / 1270 sqft

Blk 3 #02-02 to #14-02

TYPE D1(L)

137 sqm / 1475 sqft

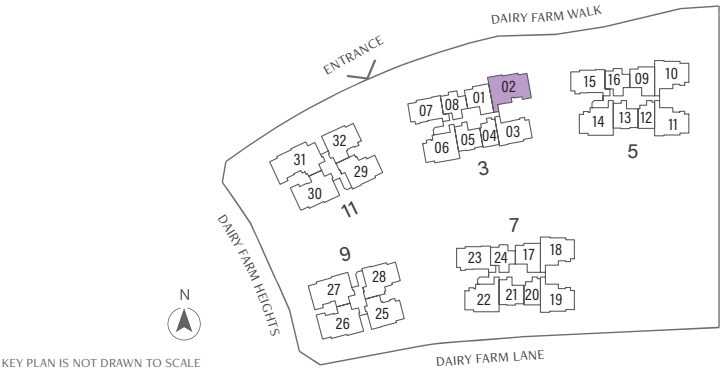
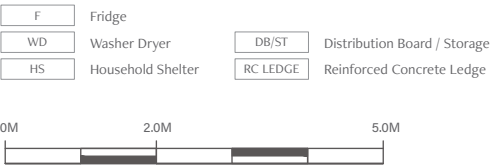
(Inclusive of 19 sqm strata void over living / dining)

Blk 3 #15-02

TYPE D1(p)

118 sqm / 1270 sqft

Blk 3 #01-02



Area includes AC ledge, balcony, Private Enclosed Space (PES) and strata void where applicable. All RC ledges are excluded from strata area and are non-load bearing. Some units are mirror images of the floor plans shown in the brochure. Orientations and facings will differ depending on the unit you are purchasing, please refer to the key plan. The above plans and illustrations are subject to changes as may be required or approved by the relevant authorities and do not form part of any offer or contract. Areas are estimates only and are subject to final survey. The balcony & PES shall not be enclosed unless with the approved balcony screen. For an illustration of the approved balcony screen, please refer to Annex 1 of this brochure.

4-BEDROOM

TYPE D2

120 sqm / 1292 sqft

Blk 9 #02-26 to #13-26

Blk 11 #02-30 to #13-30

MIRROR UNIT

Blk 9 #02-27 to #13-27



TYPE D2(L)

141 sqm / 1518 sqft

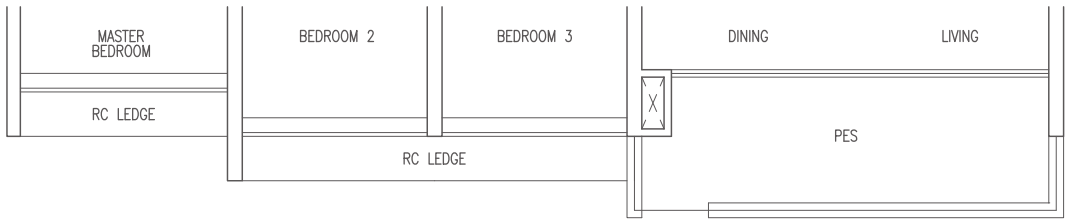
(Inclusive of 21 sqm strata void over living / dining)

Blk 9 #14-26

Blk 11 #14-30

MIRROR UNIT

Blk 9 #14-27



TYPE D2(p)

120 sqm / 1292 sqft

Blk 9 #01-26

Blk 11 #01-30

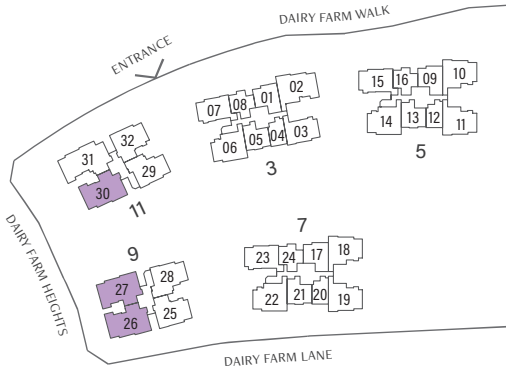
MIRROR UNIT

Blk 9 #01-27

F	Fridge	DB/ST	Distribution Board / Storage
WD	Washer Dryer	RC LEDGE	Reinforced Concrete Ledge
HS	Household Shelter		



KEY PLAN IS NOT DRAWN TO SCALE

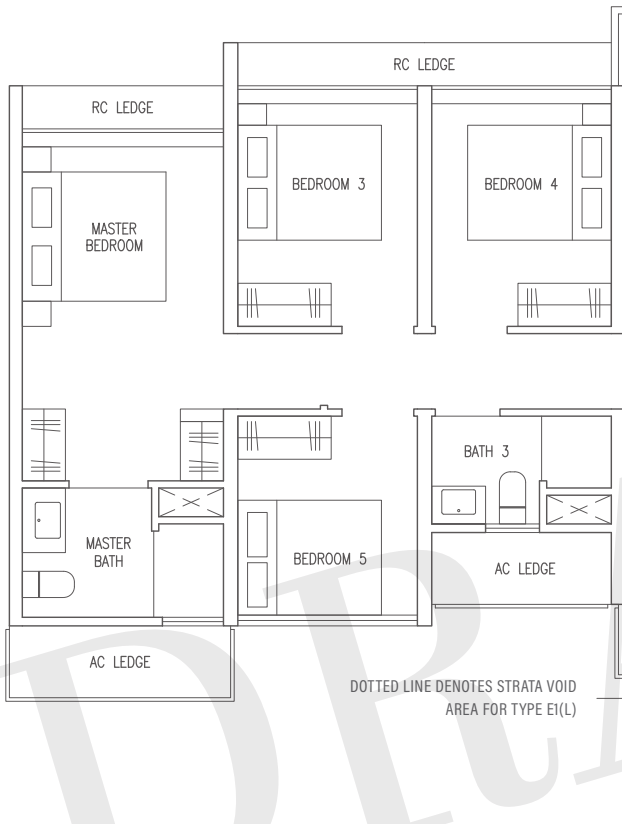


Area includes AC ledge, balcony, Private Enclosed Space (PES) and strata void where applicable. All RC ledges are excluded from strata area and are non-load bearing. Some units are mirror images of the floor plans shown in the brochure. Orientations and facings will differ depending on the unit you are purchasing, please refer to the key plan. The above plans and illustrations are subject to changes as may be required or approved by the relevant authorities and do not form part of any offer or contract. Areas are estimates only and are subject to final survey. The balcony & PES shall not be enclosed unless with the approved balcony screen. For an illustration of the approved balcony screen, please refer to Annex 1 of this brochure.

TYPE E1

143 sqm / 1539 sqft

Blk 11 #02-31 to #13-31

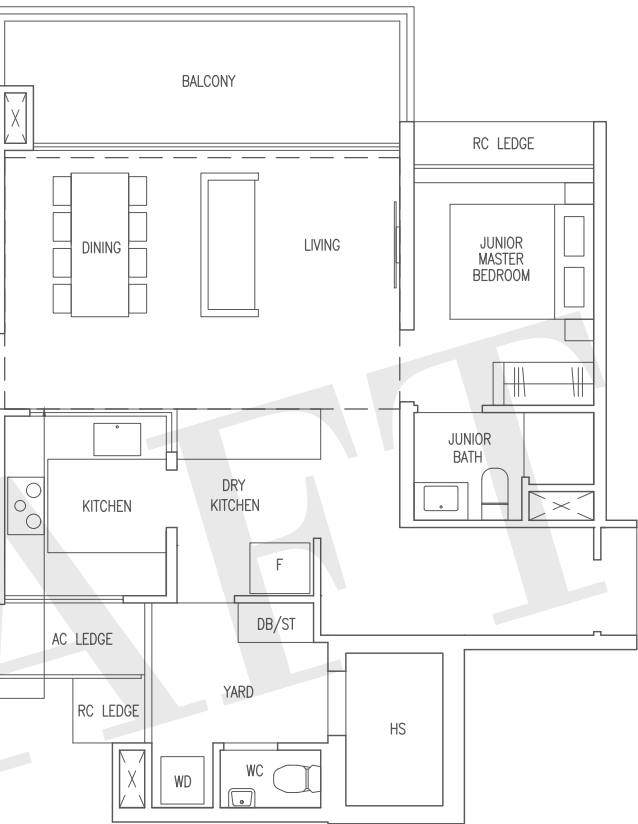


TYPE E1(L)

164 sqm / 1765 sqft

(Inclusive of 21 sqm strata void over living / dining)

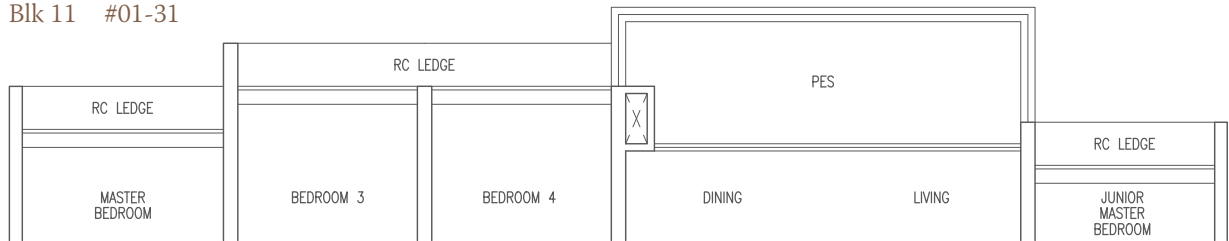
Blk 11 #14-31



TYPE E1(p)

143 sqm / 1539 sqft

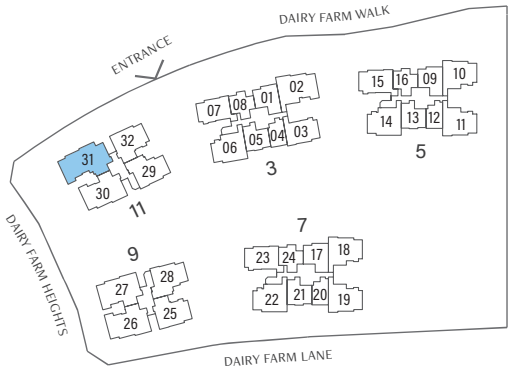
Blk 11 #01-31



F	Fridge	DB/ST	Distribution Board / Storage
WD	Washer Dryer	RC LEDGE	Reinforced Concrete Ledge
HS	Household Shelter		



KEY PLAN IS NOT DRAWN TO SCALE



Area includes AC ledge, balcony, Private Enclosed Space (PES) and strata void where applicable. All RC ledges are excluded from strata area and are non-load bearing. Some units are mirror images of the floor plans shown in the brochure. Orientations and facings will differ depending on the unit you are purchasing, please refer to the key plan. The above plans and illustrations are subject to changes as may be required or approved by the relevant authorities and do not form part of any offer or contract. Areas are estimates only and are subject to final survey. The balcony & PES shall not be enclosed unless with the approved balcony screen. For an illustration of the approved balcony screen, please refer to Annex 1 of this brochure.